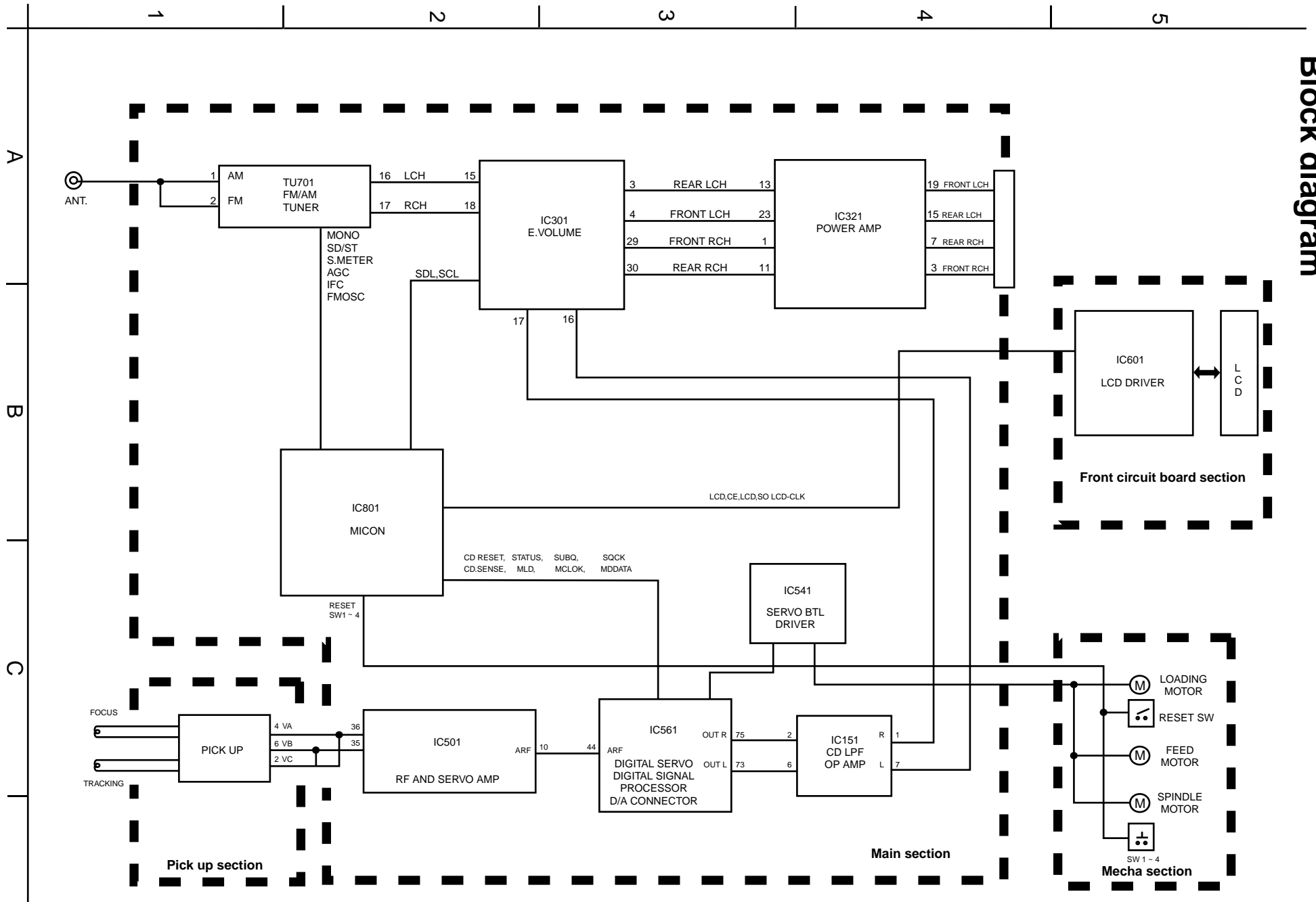


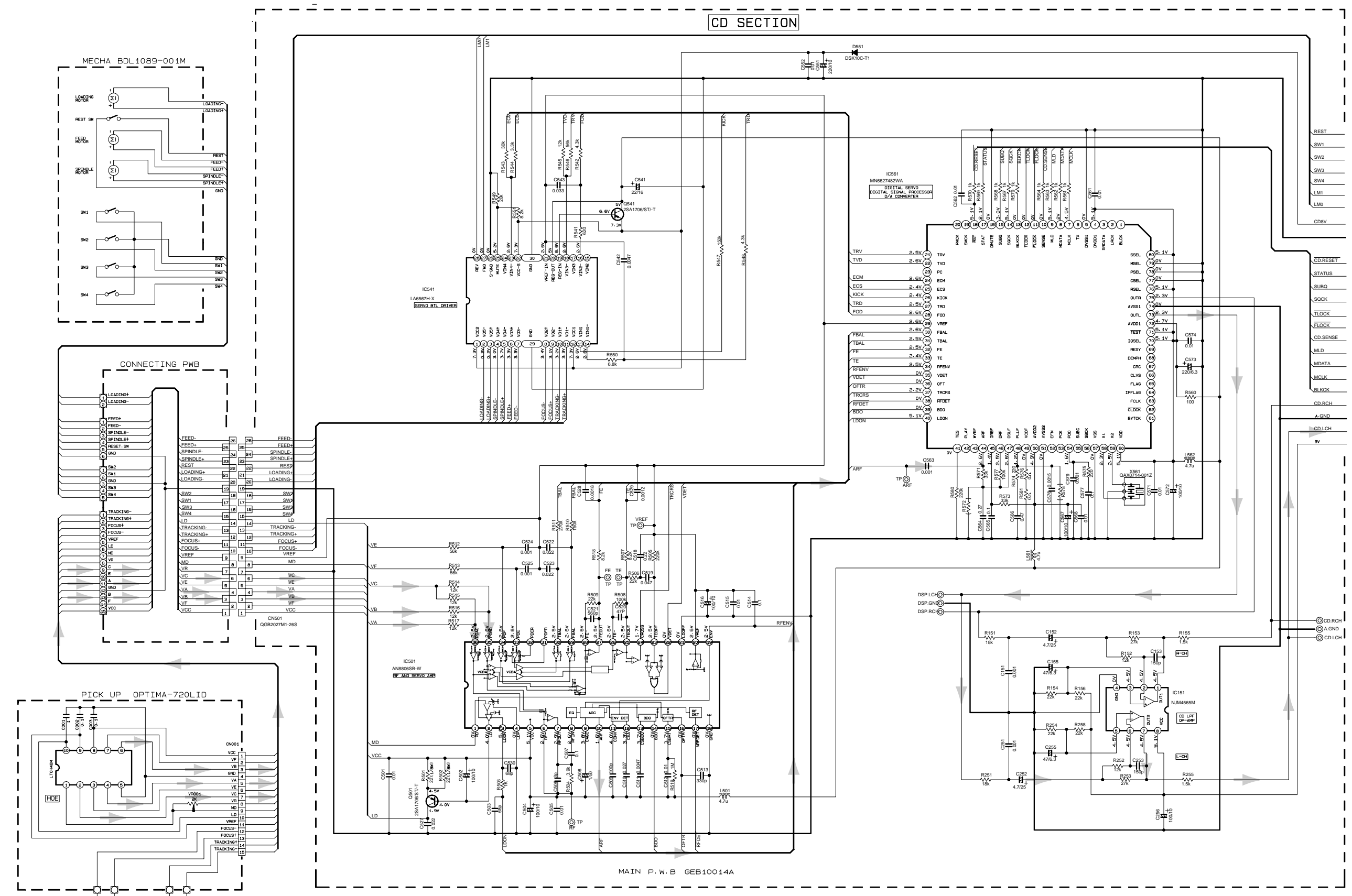
Block diagram



< M E M O >

CD servo & control section

5
4
3
2
1

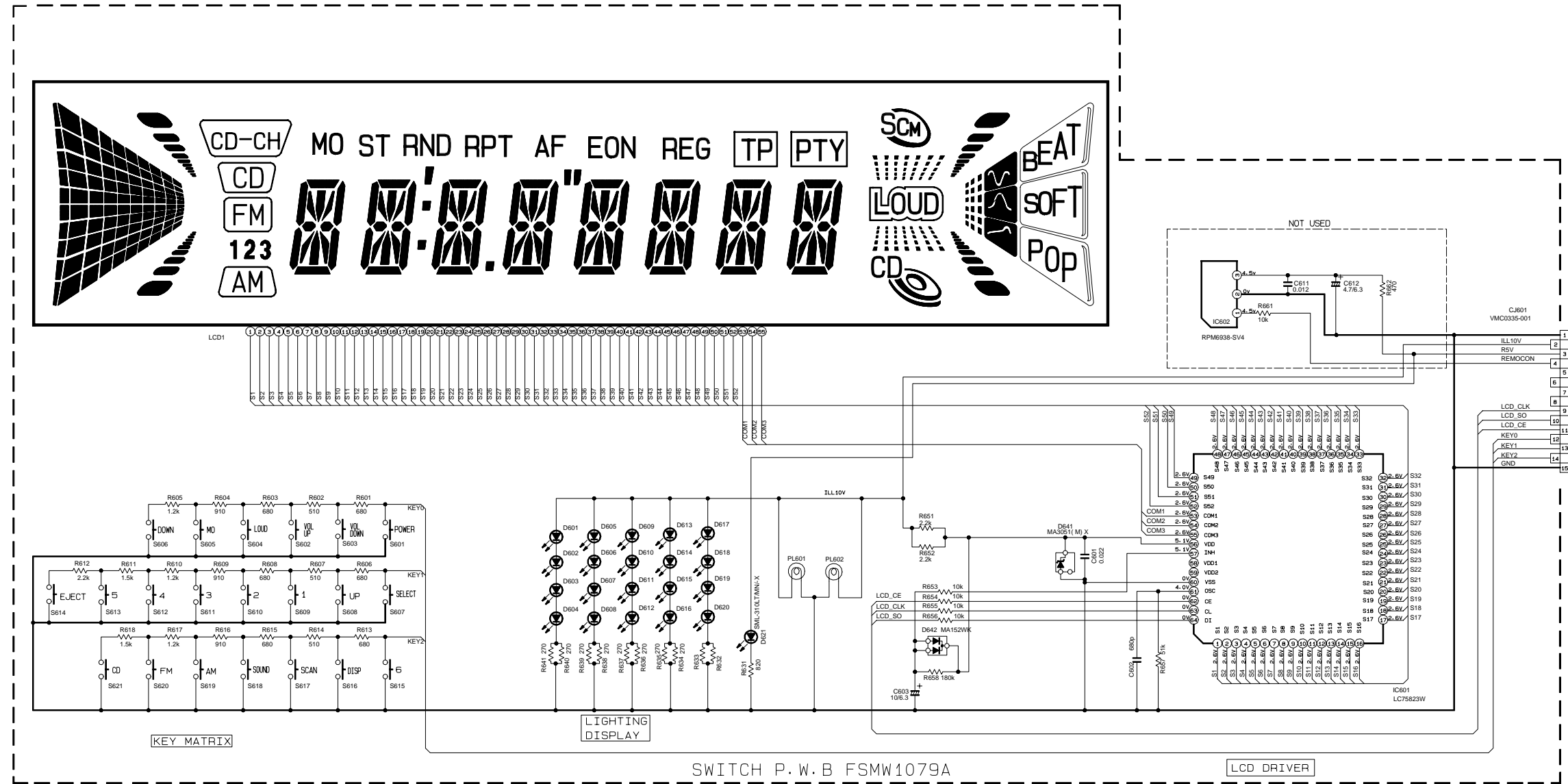


NOTE : VOLTAGE ARE DC-MEASURED WITH DIGITAL VOLT-METER WITHOUT INPUT SIGNAL CONDITION
--- CD MODE

➔ CD signal

A B C 2-4 D E F G H

■ LCD & key control section



FRONT CIRCUIT BOARD SECTION

	KD-S50J
PL601	GLL0033-003
D617	
D618	LNJ308681/1-3/X
D619	
R632	NR8402J-271X
R633	
LCD1	GLD0161-001
D601-	
D616-	LNJ308681/1-3/X
D620	
S601-	
S621	NEM0124-001X

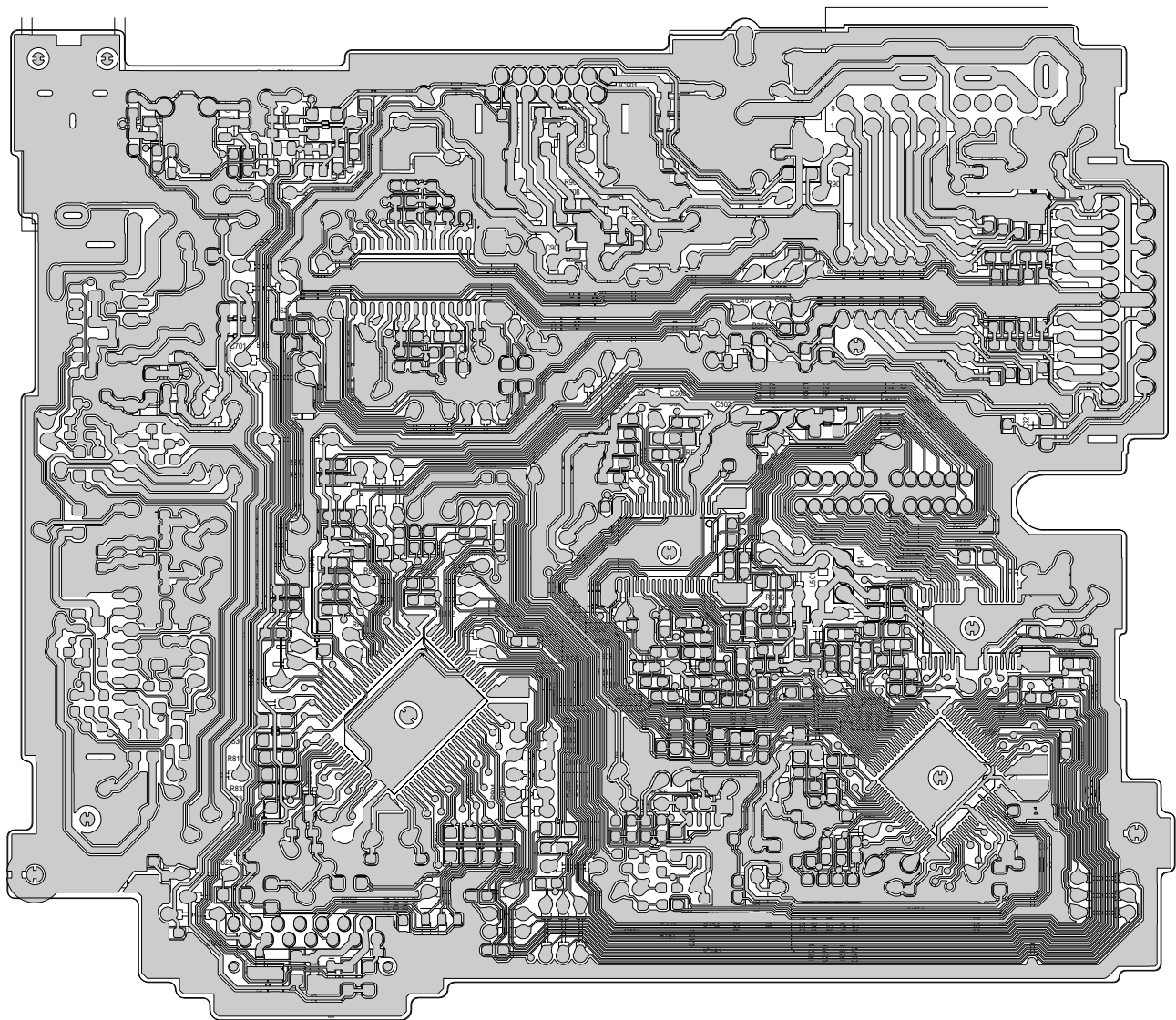
NOTE VOLTAGE ARE DC-MEASURED WITH DIGITAL VOLTMETER WITHOUT INPUT SIGNAL CONDITION

5
4
3
2
1

Printed circuit boards

■ Main board

5
4
3
2
1



A B C 2-6

